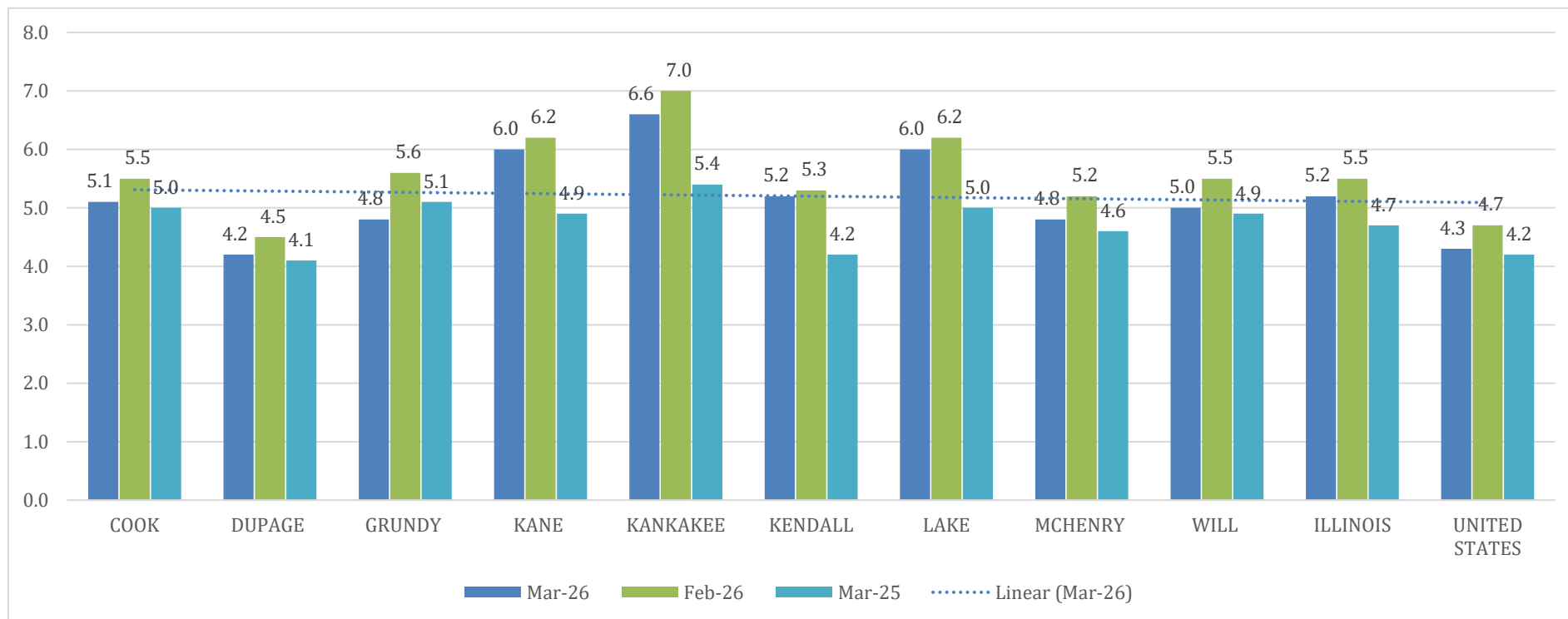


CURRENT UNEMPLOYMENT RATES CHICAGO METRO COUNTIES, ILLINOIS, and UNITED STATES



WILL COUNTY LABOR FORCE*				
Month/Year	Unemployment Rate	Labor Force	Employed	Unemployed
March 2026	5.0	388,133	368,564	19,569
February 2026	5.5	392,131	370,473	21,658
March 2025	4.9	394,793	375,418	19,375

Source: Illinois Department of Employment Security - Local Area Unemployment Statistics (LAUS). LAUS Program develops monthly and annual* estimates of the labor force, employed, unemployed and the unemployment rate for the State, Metropolitan Areas, Counties, and Municipalities that have a population of at least 25,000.